

Correction to Cell-Selective Biological Activity of Rhodium Metalloinsertors Correlates with Subcellular Localization

Alexis C. Komor, Curtis J. Schneider, Alyson G. Weidmann, and Jacqueline K. Barton*

J. Am. Chem. Soc. **2012**, *134*, 19223–19233. DOI: 10.1021/ja3090687

Page 19224. Figure 1: The connectivity of the DPE ligand in the compound $[\text{Rh}(\text{chrysi})(\text{phen})(\text{DPE})]^{3+}$ has been found to be incorrect. The correct connectivity was revealed by X-ray crystallography. The DPE ligand was found to coordinate to the metal center via one pyridine (not both) and the oxygen. The correct connectivity is shown below in the revised Figure 1. This change in connectivity does not affect the results or conclusions drawn from the study.

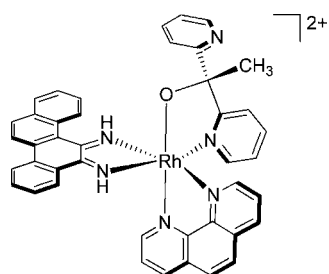


Figure 1.